

1 BASEMENT FLOOR PLAN
 SCALE: 3/32" = 1'-0"

| COLOR LEGEND | |
|--------------|------------------|
| | CONFERENCE ROOMS |
| | CLASSROOMS |
| | SUITES |
| | STAFF OFFICES |
| | RESTROOMS |

| SCOPE OF WORK LEGEND | |
|----------------------|---------------------------------------|
| | CORE AND SHELL SCOPE OF WORK - N.I.C. |
| | KUH'S BUILDING SCOPE OF WORK |
| | SHARK TANK SCOPE OF WORK |
| | FUTURE ARTIST STUDIOS - N.I.C. |
| | FUTURE UDTEC SCOPE OF WORK - N.I.C. |

- GENERAL NOTES**
- GENERAL CONTRACTOR TO LAY OUT ALL PARTITIONS AS SHOWN ON DRAWINGS & VERIFY DIMENSIONS PRIOR TO STARTING OR ORDERING ANY COMPONENTS.
 - ALL INTERIOR DIMENSIONS ARE FROM FACE OF FINISH WALL OR COLUMN CENTERLINE.
 - ALL MATERIALS AND WORK TO MEET ALL LOCAL CODES AND ORDINANCES.
 - CONTRACTOR MUST VERIFY ALL JOB DIMENSIONS, DRAWINGS, DETAILS, AND SPECIFICATIONS AND REPORT ANY DISCREPANCIES BEFORE PROCEEDING WITH WORK. ARCHITECT WILL NOT BE LIABLE FOR ANY ERRORS AND OMISSIONS NOT REPORTED BY GENERAL CONTRACTOR.
 - DRAWING SCALE SHOWN FOR REFERENCE. IF SHOWN DIMENSION DOES NOT COORDINATE WITH IDENTIFIED SCALE, CONTACT ARCHITECT PRIOR TO ASSOCIATED WORK.
 - REFER TO LIFE SAFETY PLANS FOR PARTITION FIRE-RATING DESIGNATIONS.
 - ALL FIRE EXTINGUISHER QUANTITIES AND LOCATIONS TO BE COORDINATED WITH FIRE MARSHALL DIMENSIONS WITH THE PREFIX "A" ARE VARIABLE BASED ON EXISTING FIELD CONDITIONS AND SHOULD BE VERIFIED IN THE FIELD.
 - INTERIOR FACE OF EXTERIOR WALLS - LARGE DAMAGED AREAS REPAIRED TO RECEIVE NEW 7/8" HAT CHANNEL AND (1) LAYER OF 5/8 INCH GYPSUM BOARD TO BE CUT AROUND ALL WOOD TRIM TO REMAIN. COORDINATE WITH CORE AND SHELL DRAWINGS.
 - REFER TO MEP DRAWINGS FOR MECHANICAL, ELECTRICAL, AND PLUMBING NEEDS.
 - ALL NEW CORE AND SHELL EXTERIOR WINDOWS TO RECEIVE NEW SQUARE STACK (AS PAINTED) WOOD TRIM.
 - CONTRACTOR TO PROVIDE BLOCKING IN WALLS FOR ALL WALL MOUNTED TV SCREENS, EQUIPMENT, AND MILLWORK.

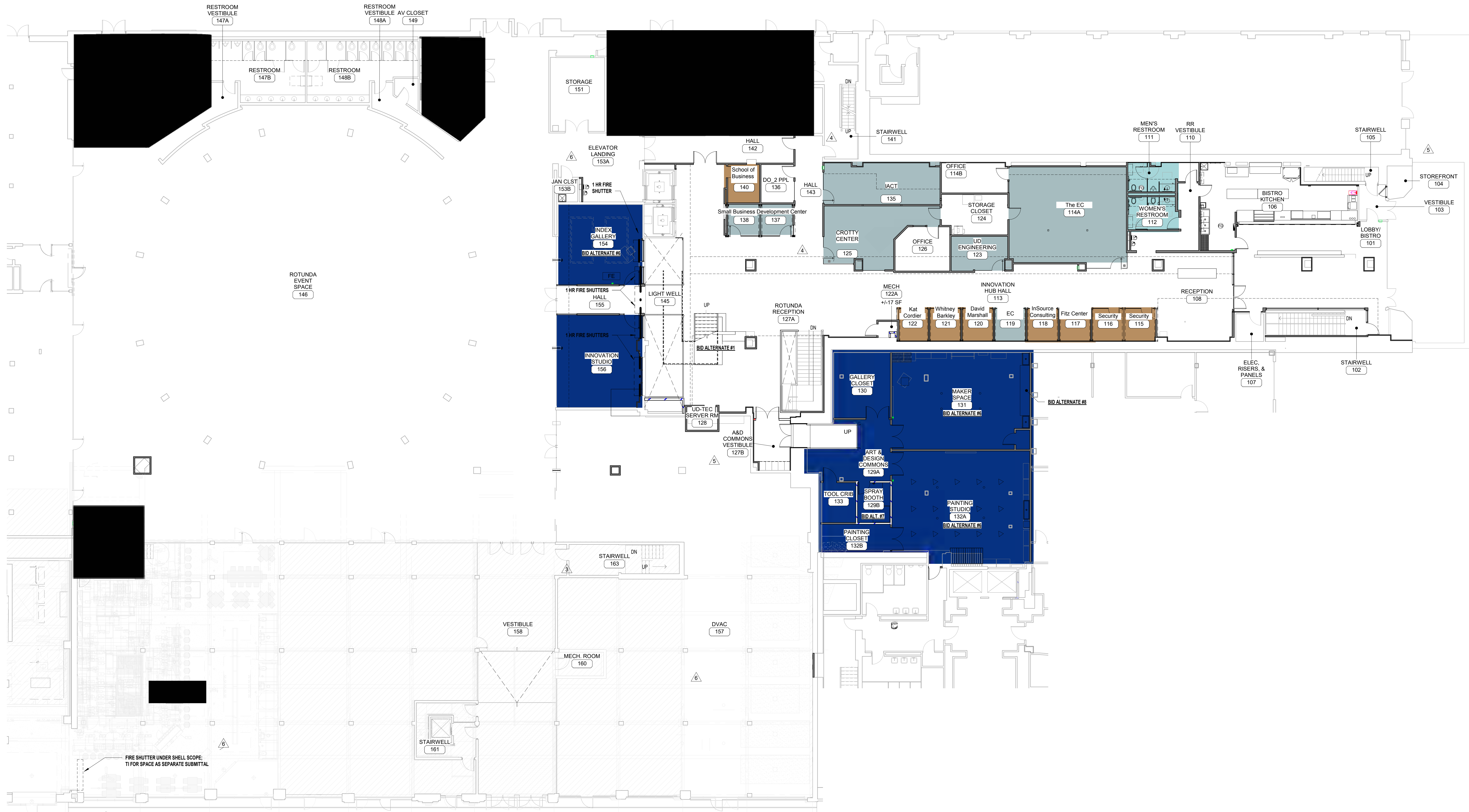
LEGEND NOTE: NOT ALL SYMBOLS ARE USED

| PARTITION LEGEND | |
|------------------|--|
| SYMBOL | DESCRIPTION |
| | EXISTING WALL |
| | NEW METAL STUD FRAMED WALL PARTITION |
| | NEW 1 HR RATED WALL. REFER TO WALL TAG FOR WALL CONSTRUCTION |
| | NEW 2 HR RATED WALL. REFER TO WALL TAG FOR WALL CONSTRUCTION |
| | PORTABLE FIRE EXTINGUISHERS IN ACCORDANCE WITH THE OHIO FIRE CODE AND NATIONAL FIRE PROTECTION ASSOCIATION STANDARD #10, 2018 EDITION. G.C. TO COORDINATE FINAL LOCATIONS AND QUANTITIES WITH FIRE MARSHALL. |
| | BID ALTERNATE. REFER TO BID ALTERNATE DESCRIPTION NARRATIVE FOR MORE INFORMATION. |
| | BID ALTERNATE. REFER TO BID ALTERNATE DESCRIPTION NARRATIVE FOR MORE INFORMATION. |
| | NEW FIRE SHUTTER. REFER TO ARCHITECTURAL SPECIFICATIONS FOR MORE INFORMATION. |



UD-TEC INNOVATION HUB
 31 S. MAIN STREET
 DAYTON, OH 45402
 ARCADE EVENT SPACE
 35 W. FOURTH STREET
 DAYTON, OH 45402
 MODA4 PROJECT NUMBER: 18026

| No. | Description | Date |
|-----|------------------------------|----------|
| 1 | BID DOCUMENTS | 05.03.19 |
| 2 | BID SET ADDENDUM 1 | 05.24.19 |
| 3 | FOR PERMIT | 08.05.19 |
| 4 | ADDENDUM 3 | 09.13.19 |
| 5 | ADDENDUM 4, FOR CONSTRUCTION | 01.24.20 |
| 6 | PLAN REVIEW COMMENTS UDTEC | 06.01.20 |



1 FIRST FLOOR PLAN
 SCALE: 3/32" = 1'-0"

| COLOR LEGEND | |
|------------------|------------------|
| [Green Box] | CONFERENCE ROOMS |
| [Blue Box] | CLASSROOMS |
| [Orange Box] | SUITES |
| [Light Blue Box] | STAFF OFFICES |
| [Dark Blue Box] | RESTROOMS |

| SCOPE OF WORK LEGEND | |
|----------------------|---------------------------------------|
| [Hatched Box] | CORE AND SHELL SCOPE OF WORK - N.I.C. |
| [Green Box] | KUHN'S BUILDING SCOPE OF WORK |
| [Orange Box] | SHARK TANK SCOPE OF WORK |
| [Light Blue Box] | FUTURE ARTIST STUDIOS - N.I.C. |
| [Pink Box] | FUTURE UDTEC SCOPE OF WORK - N.I.C. |

- GENERAL NOTES**
- GENERAL CONTRACTOR TO LAY OUT ALL PARTITIONS AS SHOWN ON DRAWINGS & VERIFY DIMENSIONS PRIOR TO STARTING OR ORDERING ANY COMPONENTS.
 - ALL INTERIOR DIMENSIONS ARE FROM FACE OF FINISH WALL OR COLUMN CENTERLINE.
 - ALL MATERIALS AND WORK TO MEET ALL LOCAL CODES AND ORDINANCES.
 - CONTRACTOR MUST VERIFY ALL JOB DIMENSIONS, DRAWINGS, DETAILS, AND SPECIFICATIONS AND REPORT ANY DISCREPANCIES BEFORE PROCEEDING WITH WORK. ARCHITECT WILL NOT BE LIABLE FOR ANY ERRORS AND OMISSIONS NOT REPORTED BY GENERAL CONTRACTOR.
 - DRAWING SCALE SHOWN FOR REFERENCE. IF SHOWN DIMENSION DOES NOT COORDINATE WITH IDENTIFIED SCALE, CONTACT ARCHITECT PRIOR TO ASSOCIATED WORK.
 - REFER TO LIFE SAFETY PLANS FOR PARTITION FIRE RATING DESIGNATIONS.
 - ALL FIRE EXTINGUISHER QUANTITIES AND LOCATIONS TO BE COORDINATED WITH FIRE MARSHALL.
 - DIMENSIONS WITH THE PREFIX "A" ARE VARIABLE BASED ON EXISTING FIELD CONDITIONS AND SHOULD BE VERIFIED IN THE FIELD.
 - INTERIOR FACE OF EXTERIOR WALLS - LARGE DAMAGED AREAS REPAIRED TO RECEIVE NEW 7/8" HAT CHANNEL AND (1) LAYER OF 5/8 INCH GYPSUM BOARD TO BE CUT AROUND ALL WOOD TRIM TO REMAIN. COORDINATE WITH CORE AND SHELL DRAWINGS.
 - REFER TO MEP DRAWINGS FOR MECHANICAL, ELECTRICAL, AND PLUMBING NEEDS.
 - ALL NEW CORE AND SHELL EXTERIOR WINDOWS TO RECEIVE NEW SQUARE STOCK 1X5 PAINTED WOOD TRIM.
 - CONTRACTOR TO PROVIDE BLOCKING IN WALLS FOR ALL WALL-MOUNTED TV SCREENS, EQUIPMENT, AND MILLWORK.
 - ALL EXISTING COLUMNS IN ROTUNDA AND FOURTH STREET BASEMENT SHALL REMAIN EXPOSED. IF IN POOR CONDITION, PATCH AND REPAIR EXISTING COLUMNS. ADD IN MORTAR TO BRICK PIERS WHERE CRACKING HAS OCCURRED.

LEGEND NOTE: NOT ALL SYMBOLS ARE USED

| PARTITION LEGEND | |
|------------------|--|
| SYMBOL | DESCRIPTION |
| [Hatched Box] | EXISTING WALL |
| [Green Box] | NEW METAL STUD FRAMED WALL PARTITION |
| [Blue Box] | NEW 1 HR RATED WALL. REFER TO WALL TAG FOR WALL CONSTRUCTION |
| [Orange Box] | NEW 2 HR RATED WALL. REFER TO WALL TAG FOR WALL CONSTRUCTION |
| [FE] | PORTABLE FIRE EXTINGUISHERS IN ACCORDANCE WITH THE OHIO FIRE CODE AND NATIONAL FIRE PROTECTION ASSOCIATION STANDARD #10, 2018 EDITION, G.C. TO COORDINATE FINAL LOCATIONS AND QUANTITIES WITH FIRE MARSHALL. |
| [WALL MOUNT] | BID ALTERNATE. REFER TO BID ALTERNATE DESCRIPTION NARRATIVE FOR MORE INFORMATION. |
| [Dashed Box] | NEW FIRE SHUTTER. REFER TO ARCHITECTURAL SPECIFICATIONS FOR MORE INFORMATION. |

UD-TEC INNOVATION HUB
 31 S. MAIN STREET
 DAYTON, OH 45402

ARCADE EVENT SPACE
 35 W. FOURTH STREET
 DAYTON, OH 45402

MOD44 PROJECT NUMBER: 18026



| No. | Description | Date |
|-----|--|----------|
| 1 | BID DOCUMENTS | 05.03.19 |
| 1 | BID SET ADDENDUM 1 | 05.24.19 |
| 2 | FOR PERMIT | 08.06.19 |
| 3 | ADDENDUM 3 | 09.13.19 |
| 4 | ADDENDUM 4 FOR CONSTRUCTION | 01.24.20 |
| 5 | PLAN REVIEW COMMENTS UDTEC | 06.01.20 |
| 6 | PLAN REVIEW COMMENTS SHARK TANK/A2 SPACE | 06.17.20 |
| 7 | ADDENDUM 7 FOR CONSTRUCTION | 07.06.20 |
| 8 | SHARK TANK BID ADDENDUM | 07.29.20 |
| 9 | FINISH UPDATES | 09.16.20 |



1 SECOND FLOOR PLAN
SCALE: 3/32" = 1'-0"

| COLOR LEGEND | |
|--|------------------|
| | CONFERENCE ROOMS |
| | CLASSROOMS |
| | SUITES |
| | RESTROOMS |
| | STAFF OFFICES |

| SCOPE OF WORK LEGEND | |
|--|---------------------------------------|
| | CORE AND SHELL SCOPE OF WORK - N.I.C. |
| | KUHNS BUILDING SCOPE OF WORK |
| | SHARK TANK SCOPE OF WORK |
| | FUTURE ARTIST STUDIOS - N.I.C. |
| | FUTURE UDTEC SCOPE OF WORK - N.I.C. |

GENERAL NOTES

- GENERAL CONTRACTOR TO LAY OUT ALL PARTITIONS AS SHOWN ON DRAWINGS & VERIFY DIMENSIONS PRIOR TO STARTING OR ORDERING ANY COMPONENTS.
- ALL INTERIOR DIMENSIONS ARE FROM FACE OF FINISH WALL OR COLUMN CENTERLINE.
- ALL MATERIALS AND WORK TO MEET ALL LOCAL CODES AND ORDINANCES.
- CONTRACTOR MUST VERIFY ALL JOB DIMENSIONS, DRAWINGS, DETAILS, AND SPECIFICATIONS AND REPORT ANY DISCREPANCIES BEFORE PROCEEDING WITH WORK. ARCHITECT WILL NOT BE LIABLE FOR ANY ERRORS AND OMISSIONS NOT REPORTED BY GENERAL CONTRACTOR.
- DRAWING SCALE SHOWN FOR REFERENCE. IF SHOWN DIMENSION DOES NOT COORDINATE WITH IDENTIFIED SCALE, CONTACT ARCHITECT PRIOR TO ASSOCIATED WORK.
- REFER TO LIFE SAFETY PLANS FOR PARTITION FIRE-RATING DESIGNATIONS.
- ALL FIRE EXTINGUISHER QUANTITIES AND LOCATIONS TO BE COORDINATED WITH FIRE MARSHALL DIMENSIONS WITH THE PREFIX "A" ARE VARIABLE BASED ON EXISTING FIELD CONDITIONS AND SHOULD BE VERIFIED IN THE FIELD.
- INTERIOR FACE OF EXTERIOR WALLS - LARGE DAMAGED AREAS REPAIRED TO RECEIVE NEW 7/8" HAT CHANNEL AND (1) LAYER OF 5/8 INCH GYPSUM BOARD TO BE CUT AROUND ALL WOOD TRIM TO REMAIN. COORDINATE WITH CORE AND SHELL DRAWINGS.
- REFER TO MEP DRAWINGS FOR MECHANICAL, ELECTRICAL, AND PLUMBING NEEDS.
- ALL WALLS AND CEILING EXTERIOR WALLS TO BE REFINISHED WITH 1/2" GYPSUM BOARD AND PAINTED.
- CONTRACTOR TO PROVIDE BLOCKING IN WALLS FOR ALL WALL MOUNTED TV SCREENS, EQUIPMENT, AND MILLWORK.

LEGEND NOTE: NOT ALL SYMBOLS ARE USED

| PARTITION LEGEND | |
|--|--|
| SYMBOL | DESCRIPTION |
| | EXISTING WALL |
| | NEW METAL STUD FRAMED WALL PARTITION |
| | NEW 1 HR RATED WALL. REFER TO WALL TAG FOR WALL CONSTRUCTION |
| | NEW 2 HR RATED WALL. REFER TO WALL TAG FOR WALL CONSTRUCTION |
| | PORTABLE FIRE EXTINGUISHER IN ACCORDANCE WITH THE OHIO FIRE CODE AND NATIONAL FIRE PROTECTION ASSOCIATION STANDARD #1. 2018 EDITION. G.C. TO COORDINATE FINAL LOCATIONS AND QUANTITIES WITH FIRE MARSHALL. |
| | BID ALTERNATE. REFER TO BID ALTERNATE DESCRIPTION NARRATIVE FOR MORE INFORMATION. |
| | NEW FIRE SHUTTER. REFER TO ARCHITECTURAL SPECIFICATIONS FOR MORE INFORMATION. |



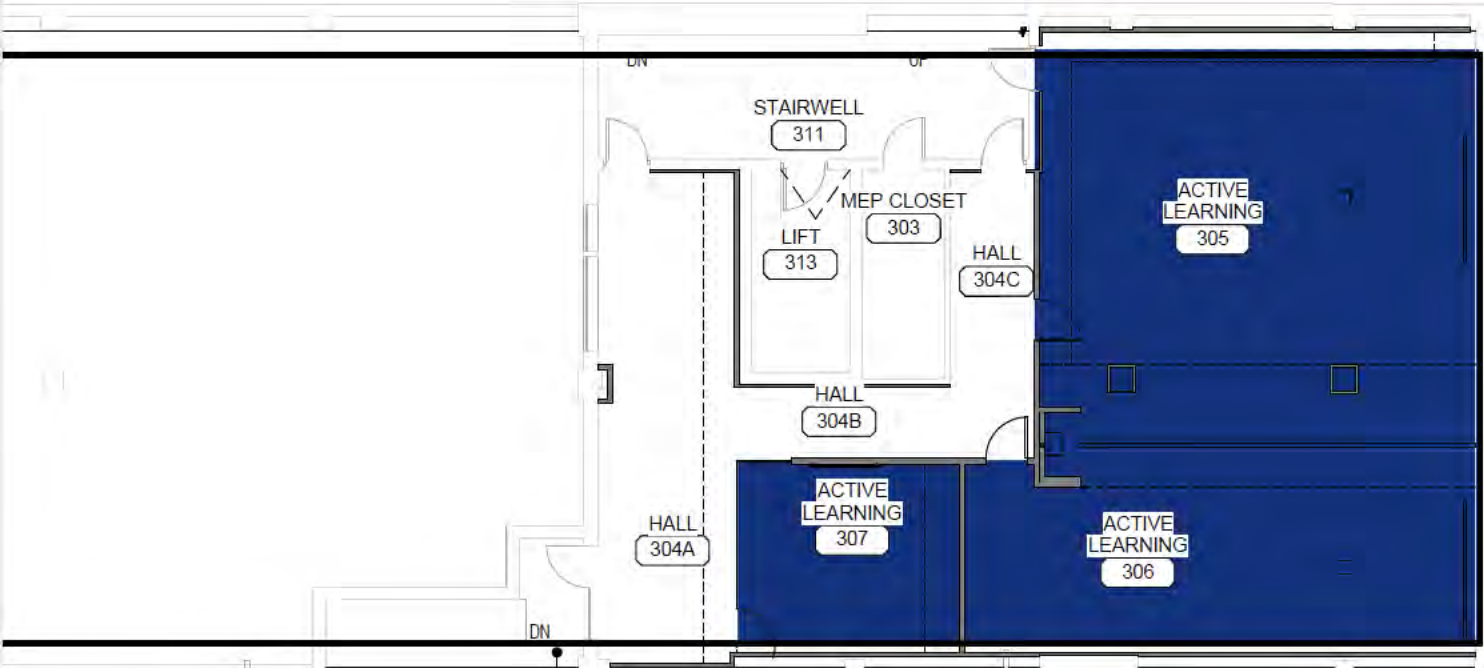
UD-TEC INNOVATION HUB
31 S. MAIN STREET
DAYTON, OH 45402

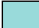
ARCADE EVENT SPACE
35 W. FOURTH STREET
DAYTON, OH 45402

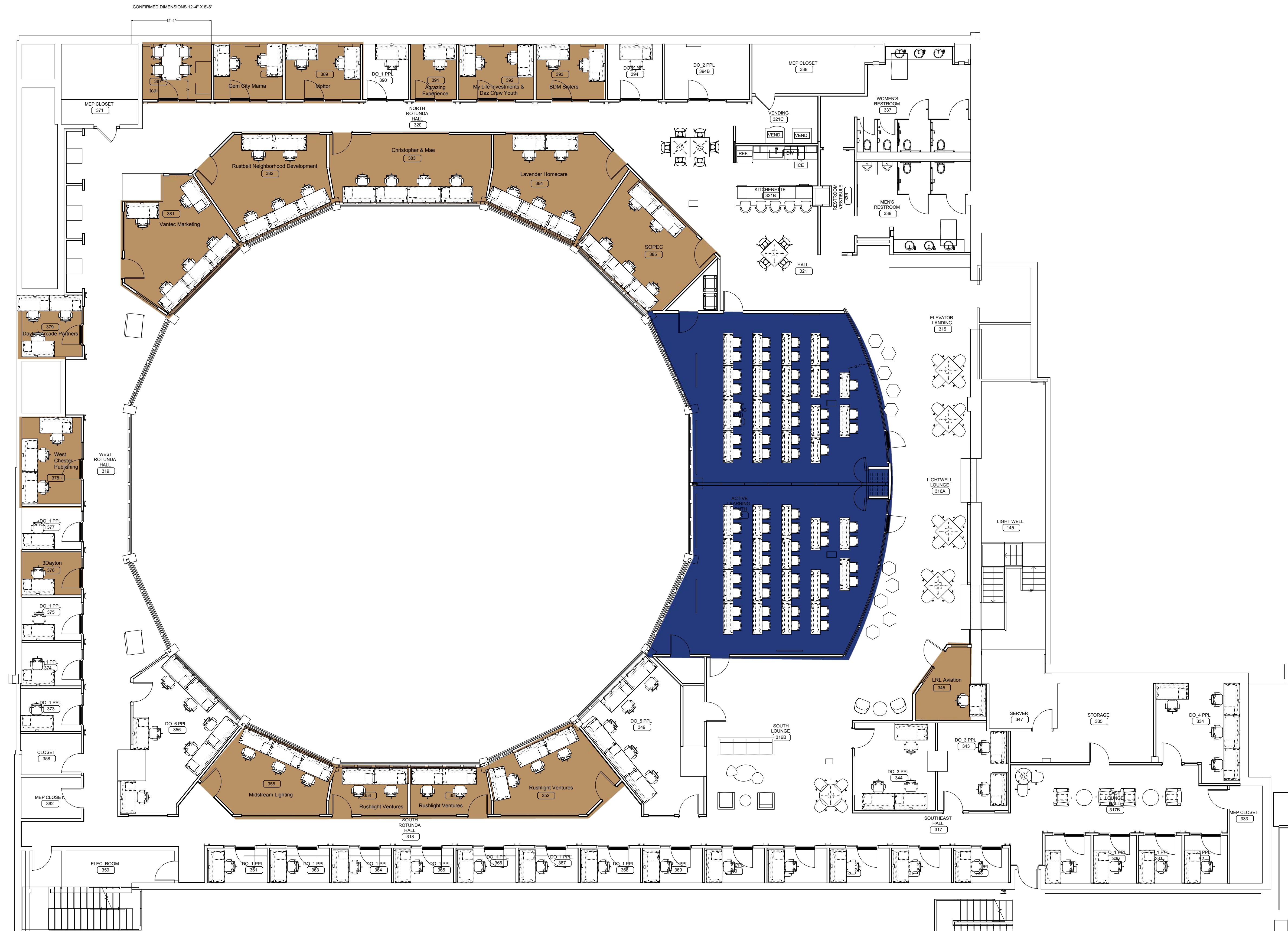
MOD44 PROJECT NUMBER: 18026

| No. | Description | Date |
|-----|------------------------------|----------|
| 1 | BID DOCUMENTS | 05.03.19 |
| 2 | BID SET ADDENDUM 1 | 05.24.19 |
| 3 | FOR PERMIT | 08.05.19 |
| 4 | ADDENDUM 3 | 09.13.19 |
| 5 | ADDENDUM 4, FOR CONSTRUCTION | 01.24.20 |
| 6 | PLAN REVIEW COMMENTS UDTEC | 06.01.20 |

3RD FLOOR MCCROY



| COLOR LEGEND | |
|---|------------------|
|  | CONFERENCE ROOMS |
|  | SUITES |
|  | STAFF OFFICES |
|  | CLASSROOMS |
|  | RESTROOMS |



UNIVERSITY OF DAYTON
 35 W. 4TH ST. ; THIRD FLOOR
 DAYTON, OH 45402

ORDER NUMBER:

486429

ACCOUNT MANAGER:

K. WASHINGTON

DESIGNER:

K. NAUYOKS

SCALE:

1/8" = 1'-0"

DATE:

8.15.22

REVISION(S):

PRELIMINARY DRAWING

DISCLAIMER: THIS DOCUMENT IS INTENDED FOR FURNITURE INFORMATION ONLY AND IS THE EXCLUSIVE PROPERTY OF APG OFFICE FURNISHINGS (APG). APG IS NOT RESPONSIBLE FOR CHANGES MADE BY THE CLIENT, SUBCONTRACTOR, OR OTHER PARTIES THAT AFFECT DESIGN, ELECTRICAL LAYOUTS, PRODUCT OR THE WORK FOR THE PROJECT WITHOUT NOTIFICATION AND APPROVAL OF APG.